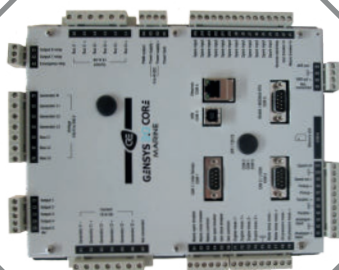




# MARINE SOLUTIONS



**Innovation**  
for  
better  
**control**





Our range of marine certified products can meet a maximum of marine requirements: synchronization and power management, uneven load sharing protection, paralleling between generators and with shore, heavy consumer management, non-essential consumer trip, ...

## MODULES

### GENSYS 2.0 MARINE

**All-in-one generator control and paralleling unit with integrated PLC PMS**

The GENSYS 2.0 MARINE is a control unit designed for marine. It is an easy-to-use control and paralleling module which can synchronize up to 32 generators. This Power Management System unit combines all necessary functions:

- Engine start/stop and protections,
- Alternator control and protections,
- Mechanical and electrical parameters display,
- Generator synchronization,
- Load sharing by kW and kVAR control,
- kW power management with several modes,
- Synchronization with shore,
- kW and kVAR Load/Unload Management,
- Tie breaker control by instructions,
- GENSYS 2.0 MARINE is configured via its front panel or via a PC with CRE Config Software.



AVAILABLE IN CORE BASE DIN RAIL MOUNTED VERSION & SWITCHBOARD MOUNTED VERSION WITH DISPLAY

### RDM 2.0 MARINE

**Remote display module for all-in-one generator control and paralleling unit**

The RDM 2.0 MARINE works as a remote display and, combine with GENSYS 2.0 CORE MARINE, can control a single or a multiple generating sets power plant.

Connected to a GENSYS 2.0 MARINE, the RDM 2.0 MARINE can be used as an additional remote display. The RDM 2.0 MARINE screen displays the same data as the GENSYS 2.0 MARINE. The display shows engine and electrical parameters for intuitive operation.



## DEMONSTRATION SUITCASE

The DEMO Case is a test and demonstration unit built in a hard shell flight case, it can be used in "demo mode" in order to simulate the sequence of a live genset in operation on a power plant, including synchronization, PID tuning, and power management adjustment; it is a perfect tool to show the product potential to any customer.

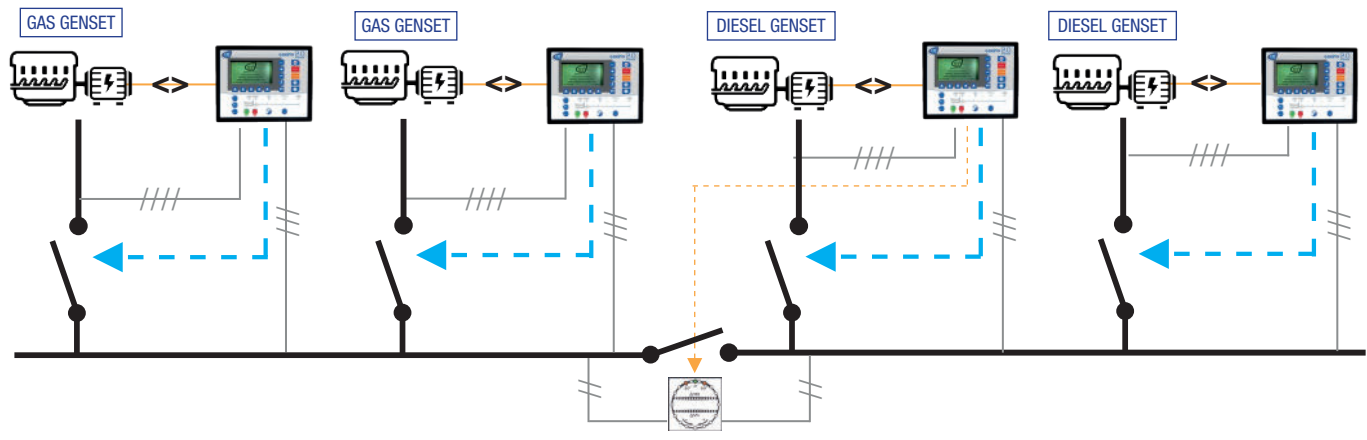
In "Normal mode" the DEMO Case will allow user to configure its site application online on a simulation tool, and to test configured sequences and EasyFlex programs, if necessary by connecting external power sources.



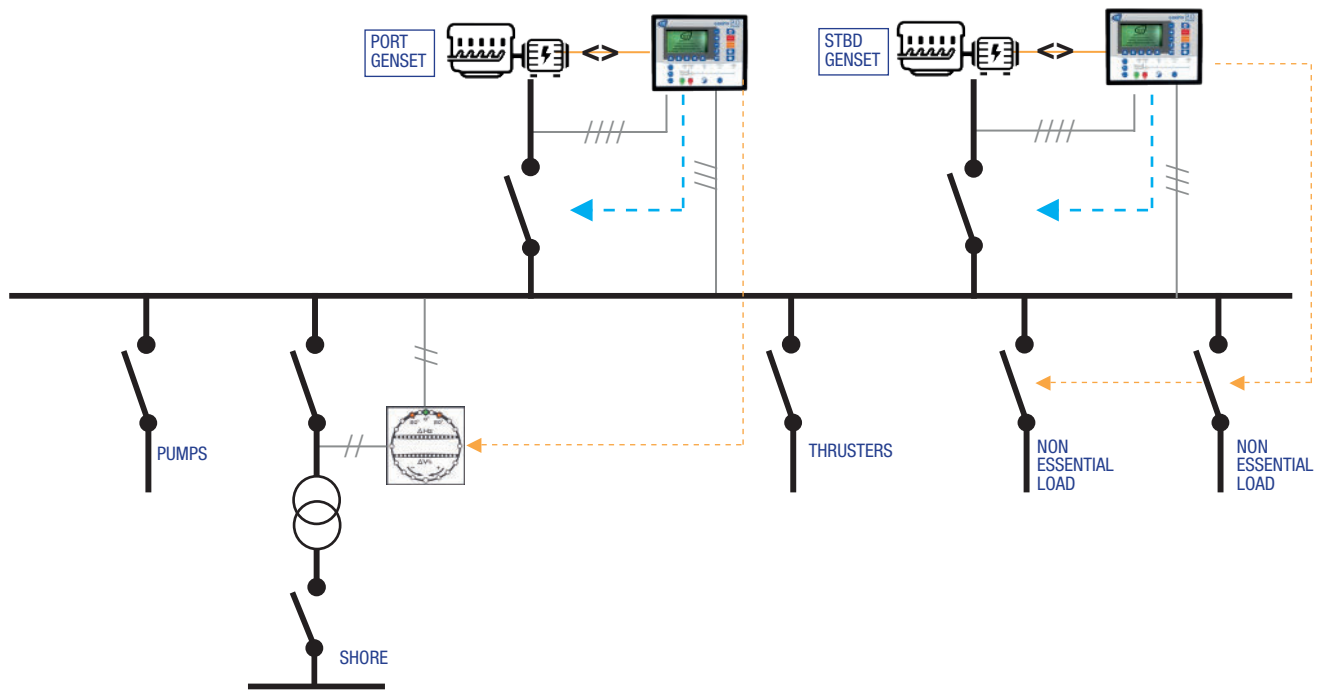
# MARINE SOLUTIONS

Innovation for better control

- **APPLICATION:** Synchronization and load management of each generator



- **APPLICATION:** Shore paralleling







EXPERT IN GENERATOR SOLUTION



[www.cretechnology.com](http://www.cretechnology.com)

MARINE RANGE\_EN\_A2018