

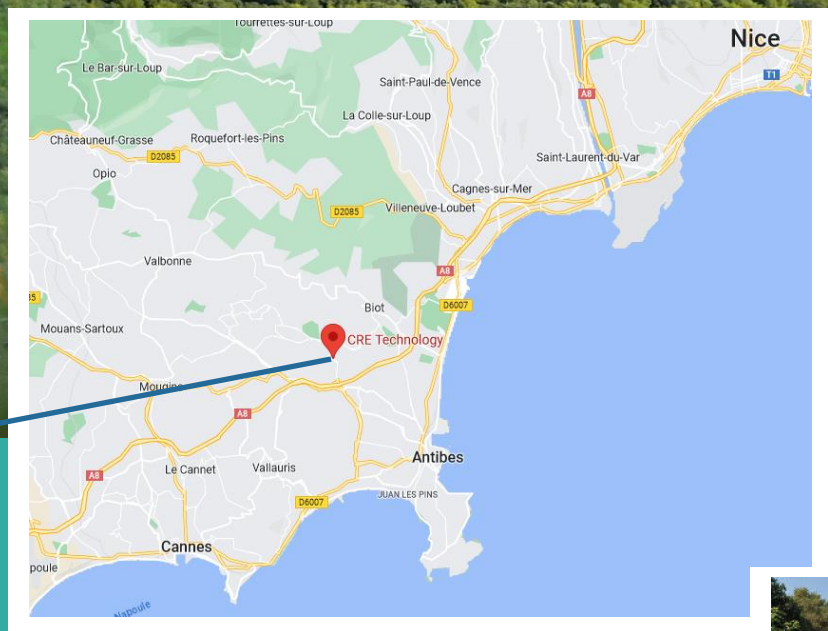


CRE TECHNOLOGY

Location & Useful information



SOPHIA ANTIPOLIS



CRE TECHNOLOGY
130 Allee Charles Victor Naudin
06410 Biot
FRANCE



How to get to us:

CRE TECHNOLOGY

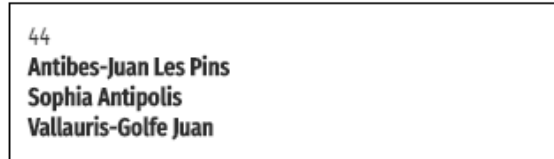
130, allée Charles-Victor Naudin - Sophia Antipolis

06410 Biot - FRANCE

Tél. : +33 (0) 492 38 86 86

Access by road:

By the A8 freeway, you will have to take the exit 44:



Follow the directional signs " Sophia-Antipolis ", you will find us at the access 20, " Les Templiers ". You can also follow the VEOLIA road signs; we are located right next door.

Access by air:

CRE TECHNOLOGY is located 20 minutes from **Nice Côte d'Azur airport** (NCE), using the A8 Tollway.

Taxi : <https://www.nice.aeroport.fr/acces/taxis>

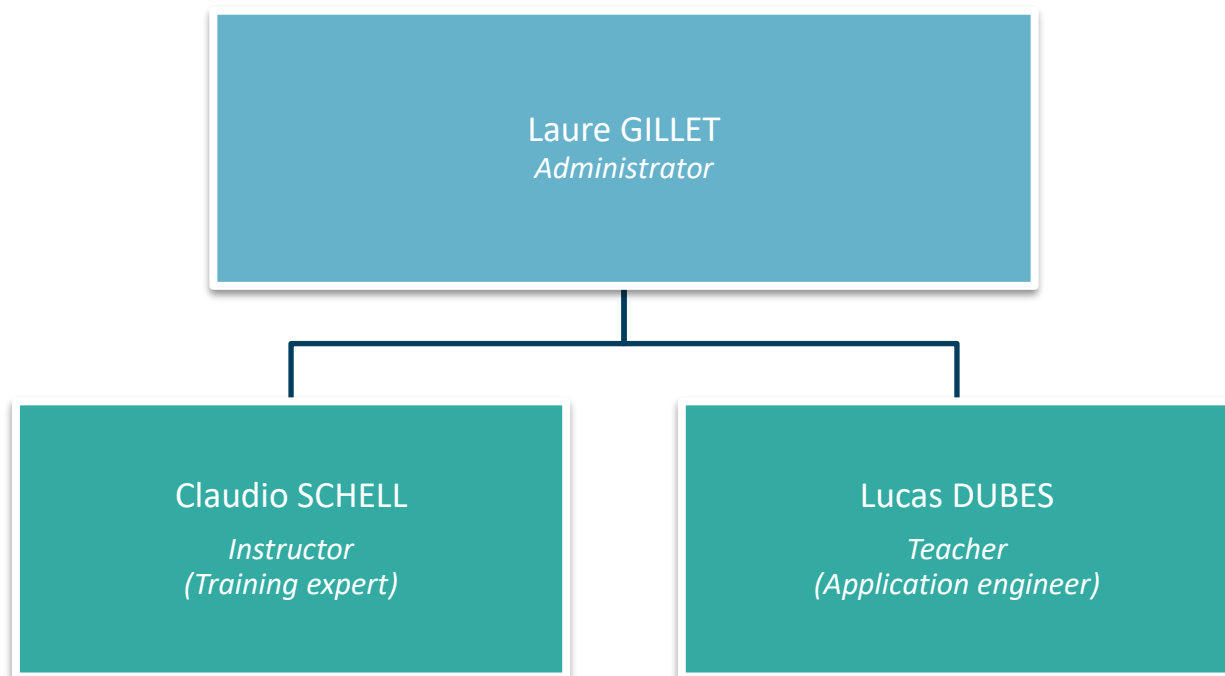
Bus : line **630** (regular shuttles between Terminal 1 and 2) from Monday to Friday for Sophia Antipolis. (Duration of the journey is about 30mn) Take the stop " **Chappes INRIA** ".

Access by Train:

CRE TECHNOLOGY is located 30 minutes from the **Antibes SNCF** train station, from there, go to the above the station and take the **BUS-TRAM A "Valbonne Sophia-Antipolis Bus Station - Chapelle Ste-Thérèse - Antibes-les-Pins"**, or bus **N°12** until the stop "Saint Philippe".



Service & Training team



If you have any questions concerning your visit, please do not hesitate to contact us:

By phone: Customer service line: +33 4 92 38 86 86 / Standard line: +33 4 92 38 86 82

By e-mail: info@cretechnology.com or support@cretechnology.com

Website: www.cretechnology.com

Do you have a disability and need special arrangements for your training?

CRE TECHNOLOGY is at your disposal to assess your needs, set up and coordinate your support plan, and implement any possible educational adjustments. And if necessary, we can answer your questions and direct you to the appropriate services.

Schedule & duration :

Training day 1 :

- 9h – 10h15 (break) 10h30 – 12h15 : Part 1
- 12h15 - 14h : **(Lunch provided by CRE Technology on site)**
- 14h - 15h15 (break) 15h30 – 17h15 : Part 2 & 3

Training day 2 :

- 9h – 10h15 (break) 10h30 – 12h15 : Part 4 (Practice)
- 12h15 - 14h : **(Lunch provided by CRE Technology on site)**
- 14h - 15h15 (break) 15h30 – 17h15 : Part 4 (Practice)

Accommodation nearby:



15 minutes' walk:

Moxy Sophia Antipolis

4440 Routes Des Dolines Towards, Rte des Lucioles, 06410 Biot

Tel: +33 (0)4 13 68 00 13

Rate: 100-120€



5-10 minutes by car:

Hôtel ibis budget Antibes

Sophia Antipolis

Chem. de Saint-Bernard Prte 16,
06220 Vallauris

Tel : +33(0) 8 92 68 32 15

Rate : 70-90€

B&B HOTEL Antibes Sophia Antipolis

3550 Rte des Dolines, 06410 Biot

Tel: +33 (0)892702811

Rate: 60-80€

Hôtel ibis Antibes Sophia Antipolis

502 Rue Albert Caquot,
06560 Valbonne

Tel: +33 (0)4 93 65 30 60

Rate: 80-100€

Hôtel Mercure Antibes Sophia Antipolis

Rue Albert Caquot, 06560 Valbonne

Tel: +33 (0)4 92 96 04 04

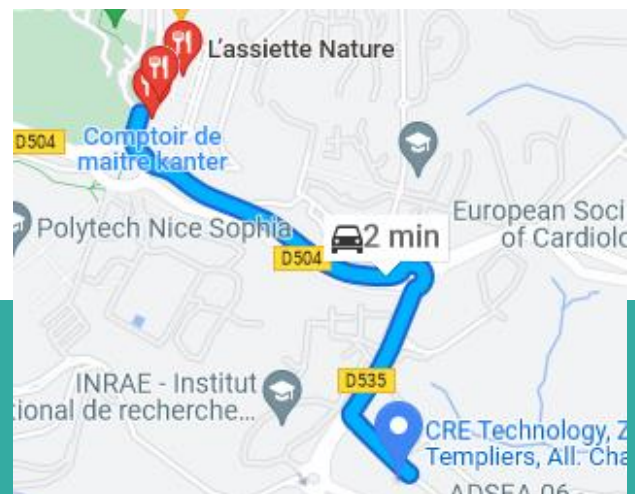
Rate: 140-200€

Restaurants and shops:

Dinner :

You will find dining options in the evening at the selected hotels, and you can also find many places to eat in the **Saint Philippe** area near CRE Technology:

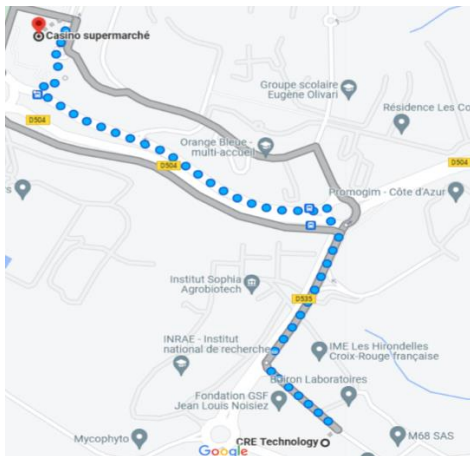
- Le Provençal Golf
- Comptoir de Maître Kanter
- Green2.0
- L'Assiette nature



Shopping & mall:

Casino supermarché

ZAC St Philippe II, Av. Roumanille
06410 Biot



Centre commercial Carrefour Antibes

Chem. de Saint-Claude, 06600 Antibes



Activities in the area:

If you wish to take advantage of your stay in the region to visit the French Riviera and the surrounding area, we can recommend the following emblematic and typical places of the region:

Ville de Nice :

<https://www.explorenicecotedazur.com/>



Ville de Cannes :

<https://www.cannes-france.com/>



Village de Biot :

<https://www.biot-tourisme.com/>



Antibes – Juan les Pins :

<https://www.antibesjuanlespins.com/>



If you have any questions regarding your visit, please do not hesitate to contact us:

Tel: Customer service: +33 4 92 38 86 86 / Office: +33 4 92 38 86 82

Mail: info@cretechnology.com or support@cretechnology.com

Website : www.cretechnology.com