



# GENSYS GENSYS MARINE

*Connecting with Windows 7/8*



Part Number:  
A40 Z0 9 0246

CRE Technology believes that all information provided herein is correct and reliable and reserves the right to update at any time. CRE Technology does not assume any responsibility for its use. E & O E.

## CRE TECHNOLOGY



130, Allée Victor Naudin  
Zone des Templier  
Sophia-Antipolis  
06410 Biot  
FRANCE



Phone: +33 (0)4 92 38 86 82

Fax: +33 (0)4 92 38 86 83

Website: [www.cretechnology.com](http://www.cretechnology.com)



Email: [info@cretechnology.com](mailto:info@cretechnology.com)

### NOTE



Read this entire manual and all other publications pertaining to the work to be performed before installing, operating, or servicing this equipment. Apply all plant and safety instructions and precautions. Failure to follow instructions can cause personal injury and/or property damage.

Motors, turbines and any other type of generator must be equipped with protections (overspeed, high temperature, low pressure...) depending on the power plant).

Any changes of the normal use of the equipment can cause human and material damage.

For further information, please contact your CRE technology distributor or the After-Sales Service Team.

All CRE Technology products are delivered with one year warranty, and if necessary we will be happy to come on site for product commissioning or troubleshooting. The company also provide specific trainings on our products and softwares.



Technical support: +33 (0)4 92 38 86 86 (office hours: 8.30AM-12AM / 2PM-6PM GMT+1).

Email: [support@cretechnology.com](mailto:support@cretechnology.com)



SKYPE: support-cretechnology.com



### INFORMATION

You can download the most up-to-date version of this documentation and different other documentations relating to CRE technology products on our Web site <http://www.cretechnology.com>.

# Technical documentation history

Date	Version	Comments
April 2009	A	Initial revision.
Feb. 2013	B	Use of a CRE technology specific modem driver for Windows 7/8 communication.

You can download the most up-to-date version of this documentation and different other documentations relating to Gensys products on our Web site: <http://www.cretechnology.com>.

## Documentations available on CRE technology Web site:

- ❖ A40 Z0 9 0020 x-EN is the Gensys technical documentation (this manual). This documentation is generally used for product integration.
- ❖ A40 Z0 9 0030 x- is the complete variable list with labels, units and limits in all languages, in EXCEL WORKBOOK format. This documentation is generally used as reference during the installation phase. It is generally called "EXCEL FILE".



## NOTE

*Read this entire manual and all other publications pertaining to the work to be performed before installing, operating, or servicing this equipment. Apply all plant and safety instructions and precautions. Failure to follow instructions can cause personal injury and/or property damage.*

*Contact your CRE Technology distributor for course training.*

# Table of content

1	NON-PNP MODEM CREATION .....	5
2	REMOTE ACCESS CONNECTION CREATION .....	9
3	UPDATING « HOSTS » FILE.....	17
4	WEB BROWSER CONFIGURATION.....	18
5	CRE TECHNOLOGY .....	21

---

*Note:*

*This document describes how to connect a computer running Microsoft Windows 7 or Windows 8 operating system to a Gensys module using an RS232 serial communication port.*

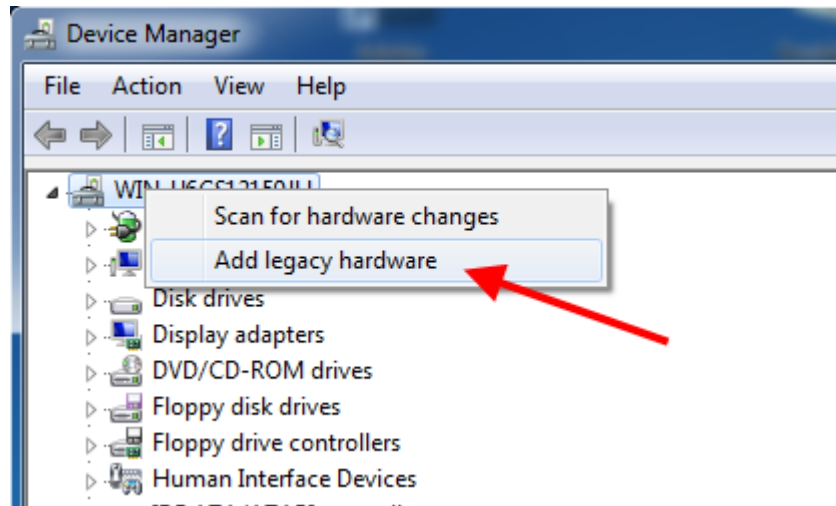
*The same method is used under previous versions of Windows such as Windows XP and Windows Vista but the layout in the configuration panel and the dialog boxes may differ depending on the operating system.*

---

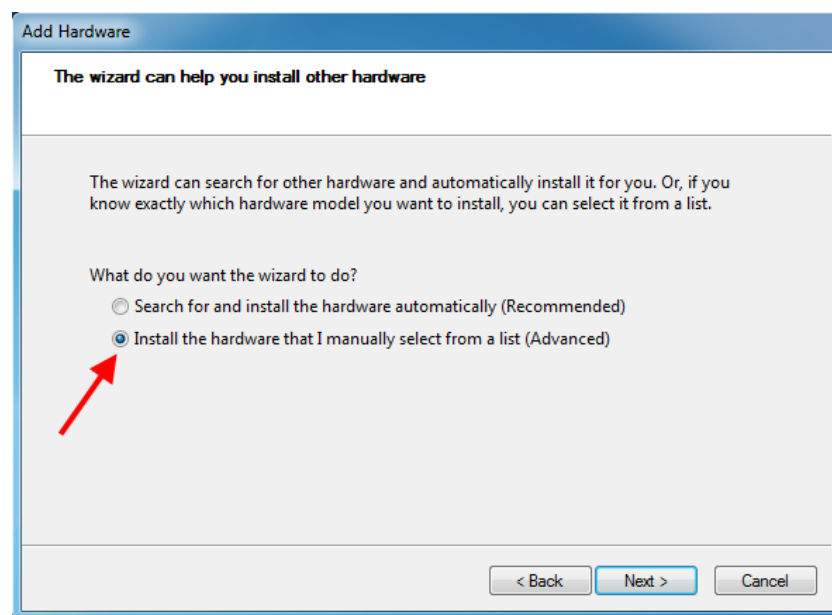
# 1 NON-PNP MODEM CREATION

---

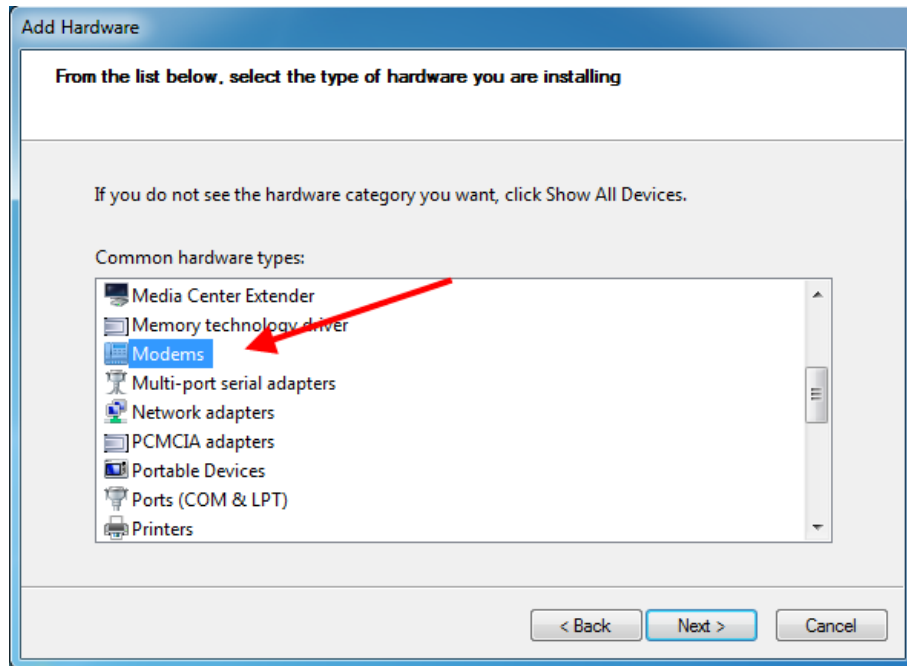
- 1) Click on « **Start>Control Panel>Device Manager** »
- 2) Right click on your computer's name and click on « **Add legacy hardware** ».



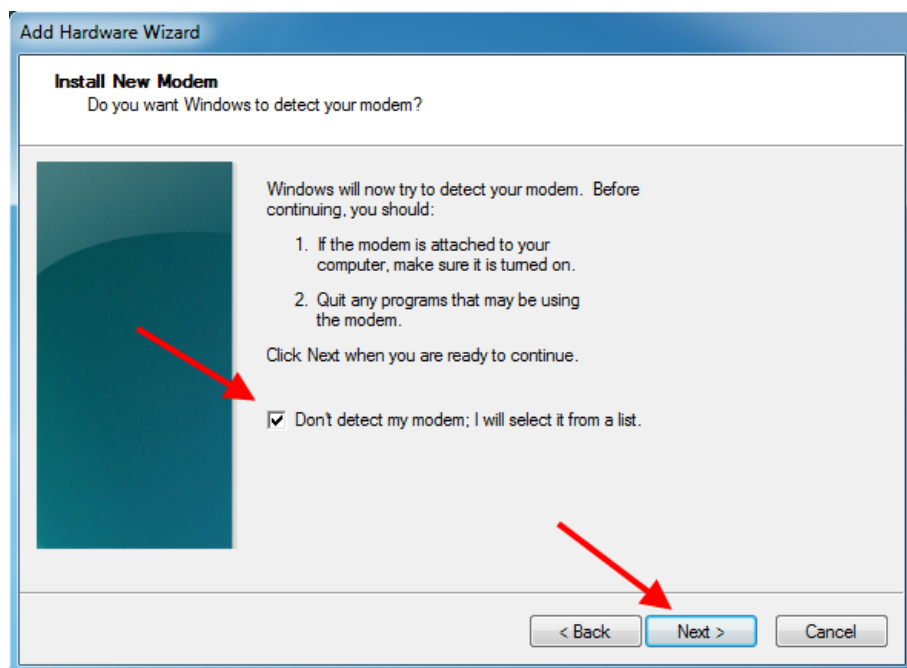
- 3) The Add hardware wizard appears: click on « **Next** ».
- 4) Choose «**Install the hardware that I manually select from a list (Advanced)** » and click on « **Next** ».



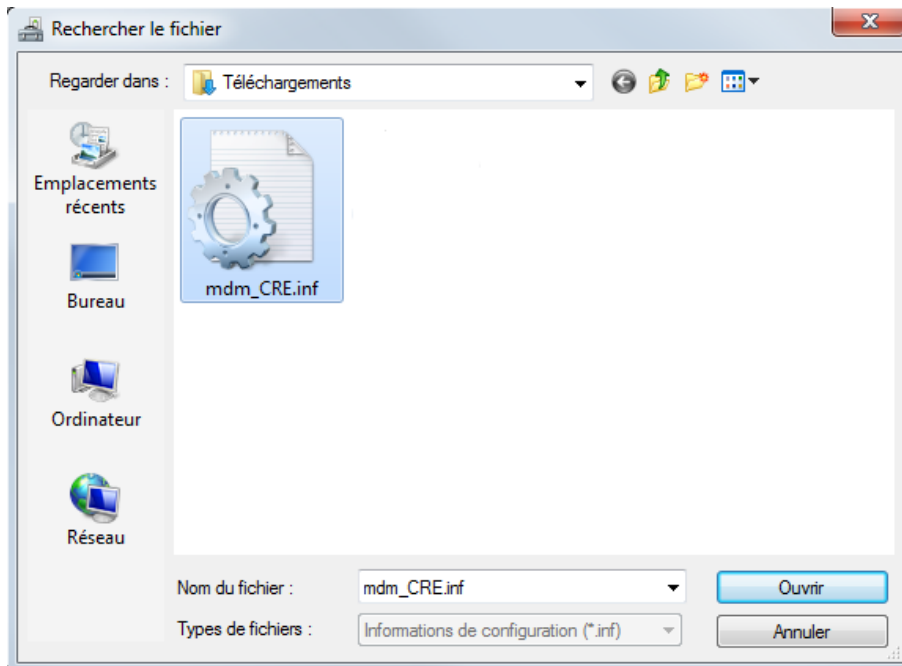
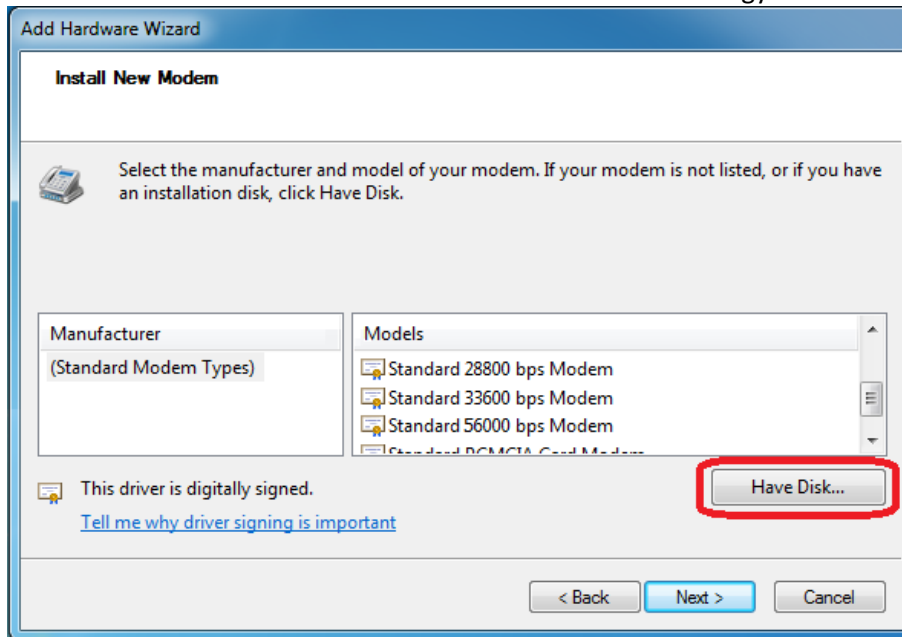
- 5) Choose the hardware type « **Modems** » and click on « **Next** ».



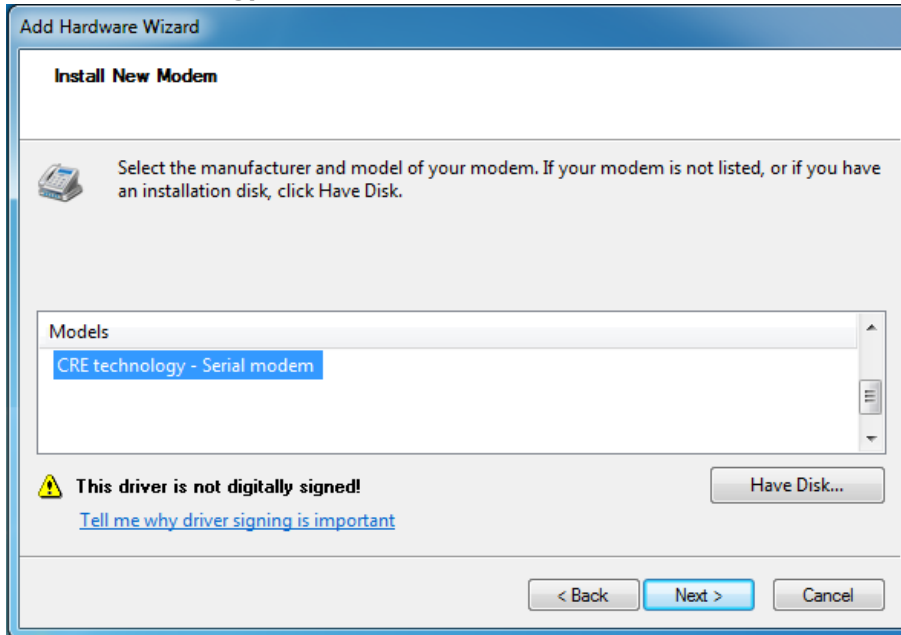
- 6) Check « **Don't detect my modem; I will select it from a list.** » and click on « **Next** ».



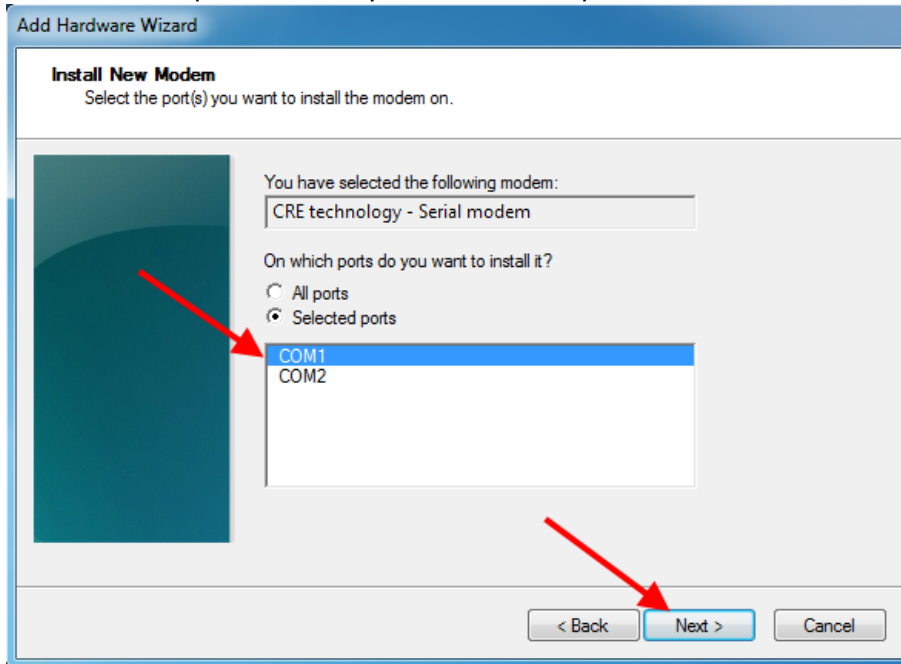
- 7) Click on « **Have Disk** » button and browse to the CRE technology driver file “*mdm\_CRE.inf*”.



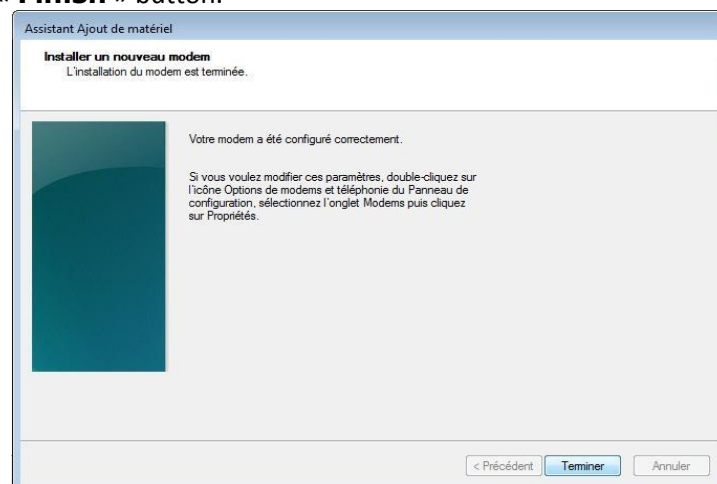
- 8) Select “**CRE technology – serial modem**” and click on « **Next** ».



- 9) Choose the COM port on which you connect Gensys and click on « **Next** ».



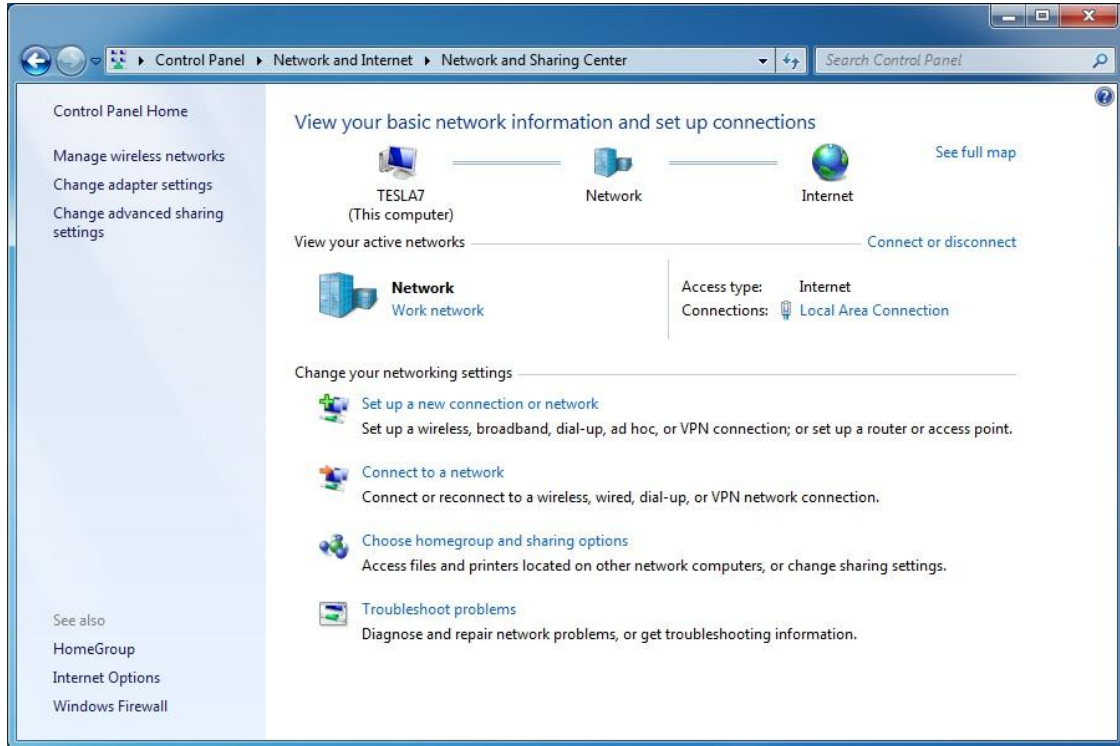
- 10) Click on « **Finish** » button.



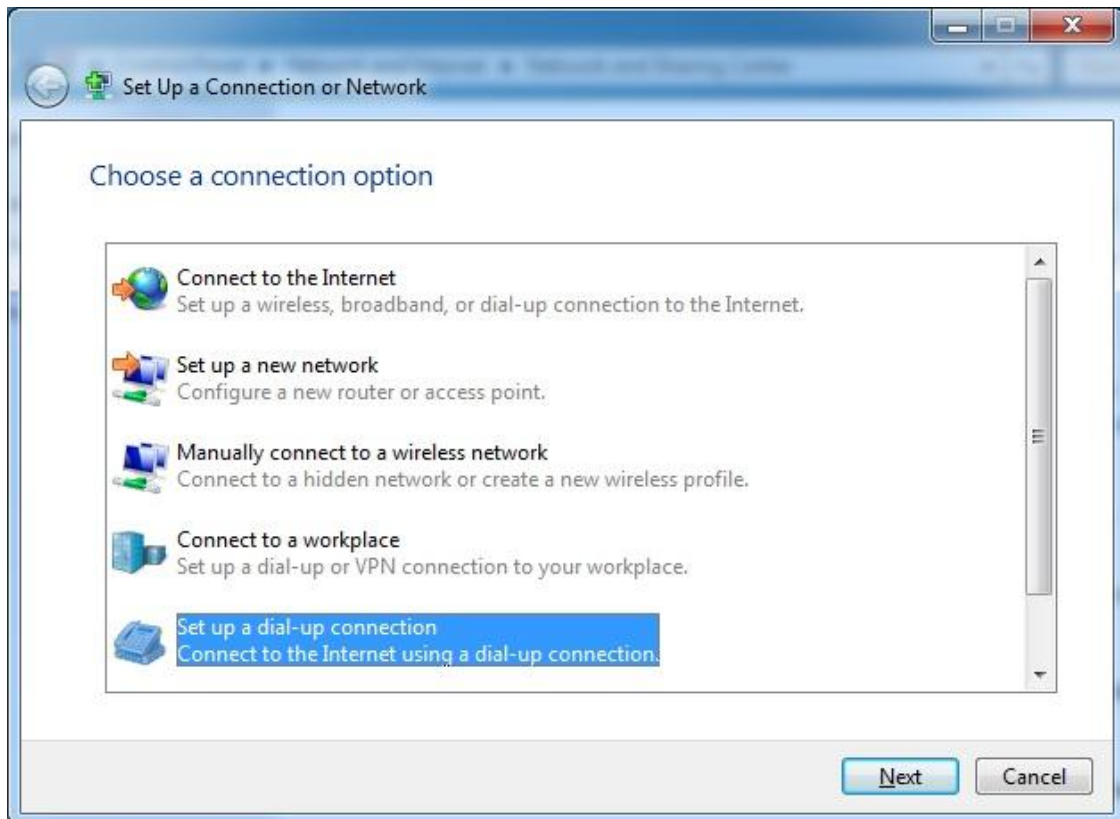


## 2 REMOTE ACCESS CONNECTION CREATION

- 1) Click on « **Start>Control Panel>Network and Sharing Center** »
- 2) Click on « **Connect to a network** ».



- 3) On Windows 7 systems, choose the option « **Set up a dial-up connection** ». On Windows 8 systems, select "**Connect to a workplace**" and then select "**Dial directly**".



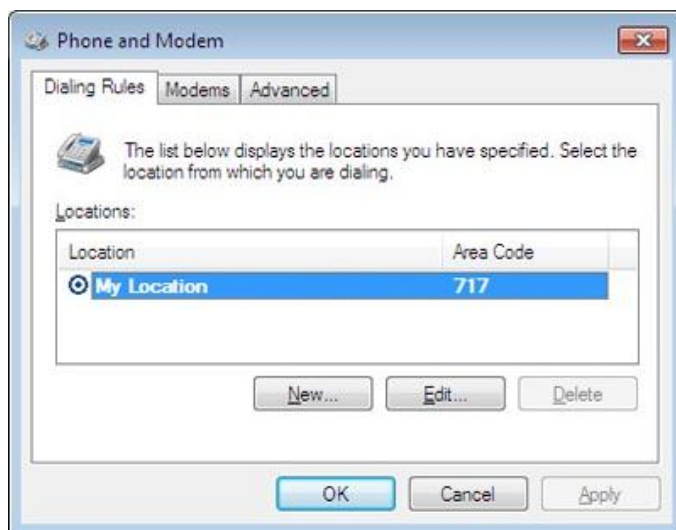
- 4) Choose the modem you have created previously.



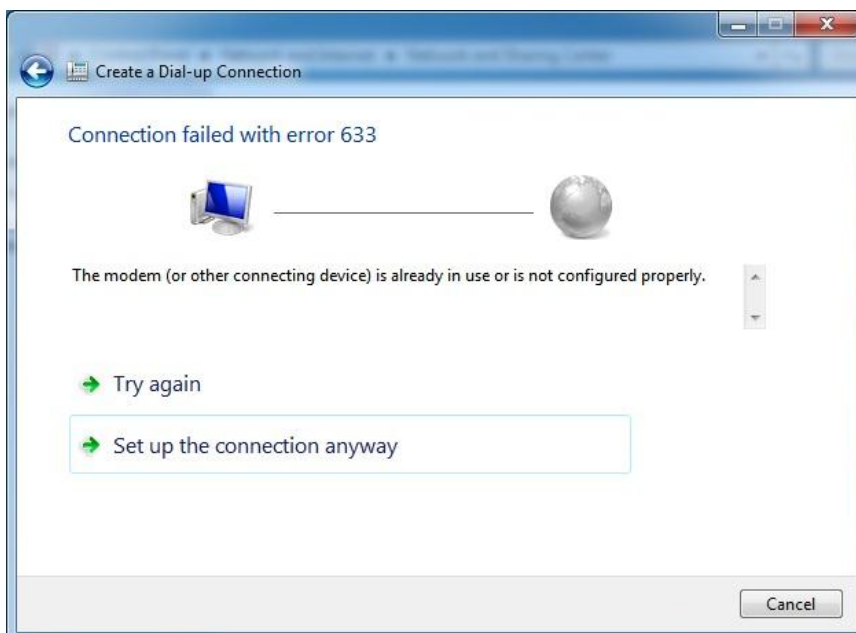
- 5) Type « 123 » in the field « **Dial-up phone number** ».
- You can name your connection « **Gensys** » in field « **Connection name** ».
  - Tick checkbox “Allow other people” if this connection will be used by different users.



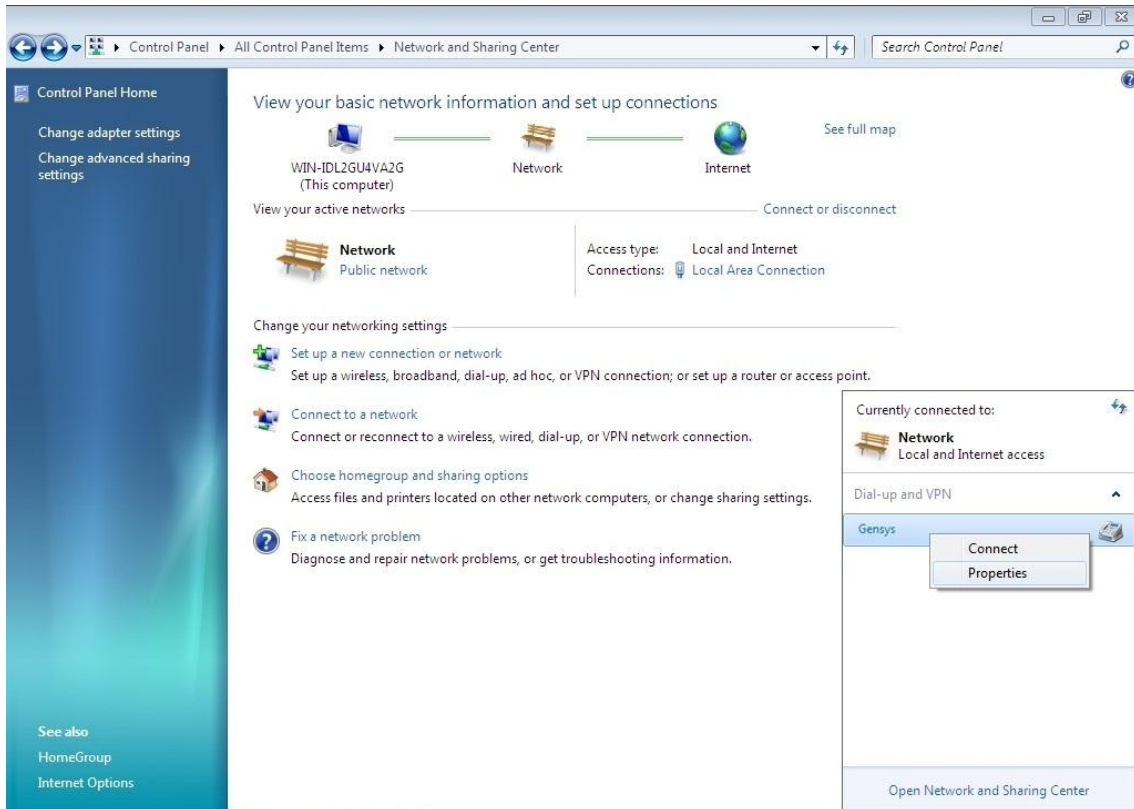
*Note: you may need to activate dialing rules, either by using “Dialing rules” in the window above or through control panel section “Phone and Modem”. See example in the screenshot below.*



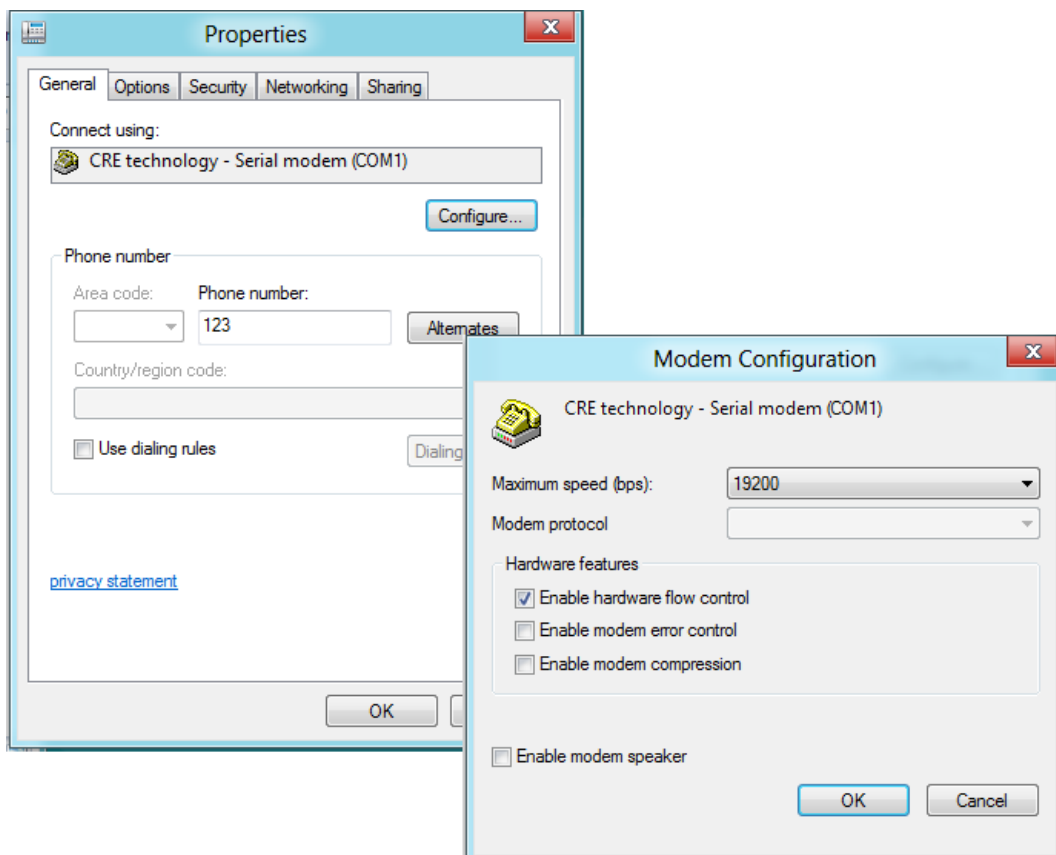
- Click on « **Connect** »: connection will fail because it is not yet fully setup.
- Click on «**Set up the connection anyway** » and then on « **Close** ».



- 6) Click on « **Start>Control Panel>Network and Sharing Center** »
- 7) Click on « **Connect to a network** », choose the connection you have just created with right click then click on « **Properties** ».



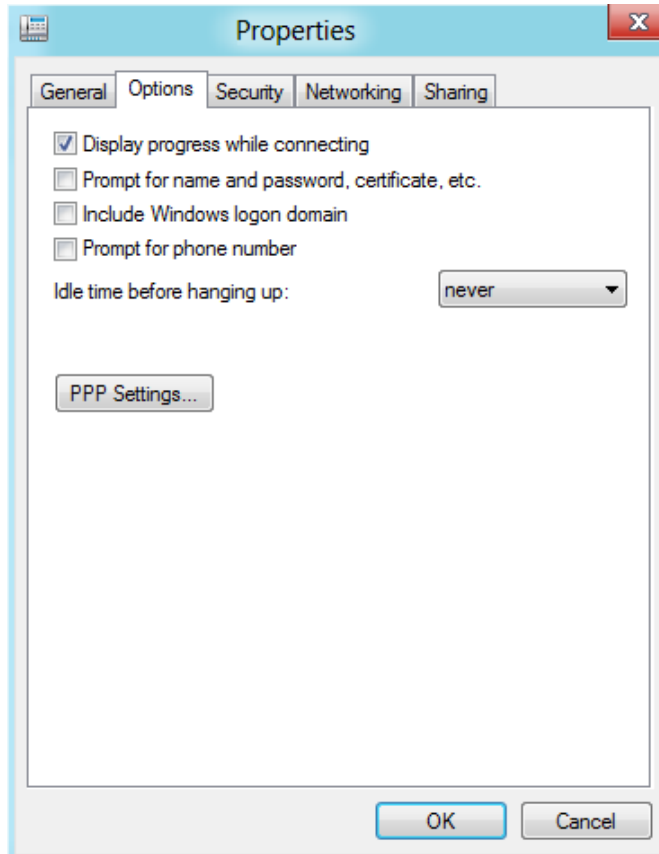
- 8) Check the modem is ticked then click on « **Properties** ».
- 9) Check that maximal speed is set to **19200bits/s**, uncheck options « **Activate the modem error control** » and « **Activate modem compression** » and click on « **OK** ».



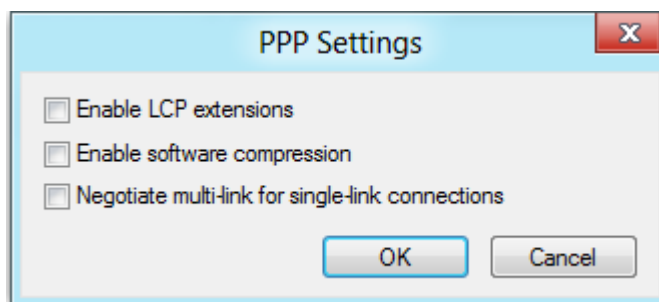
- 10) Click on « **Options** » tab and tick only the dialing option « **display progress while connecting** ».

Redialing options (if displayed)

- 3 attempts
- 1 minute delay between each attempt
- idle time before hanging up « **never** »
- untick option « **Redial if line is dropped** »

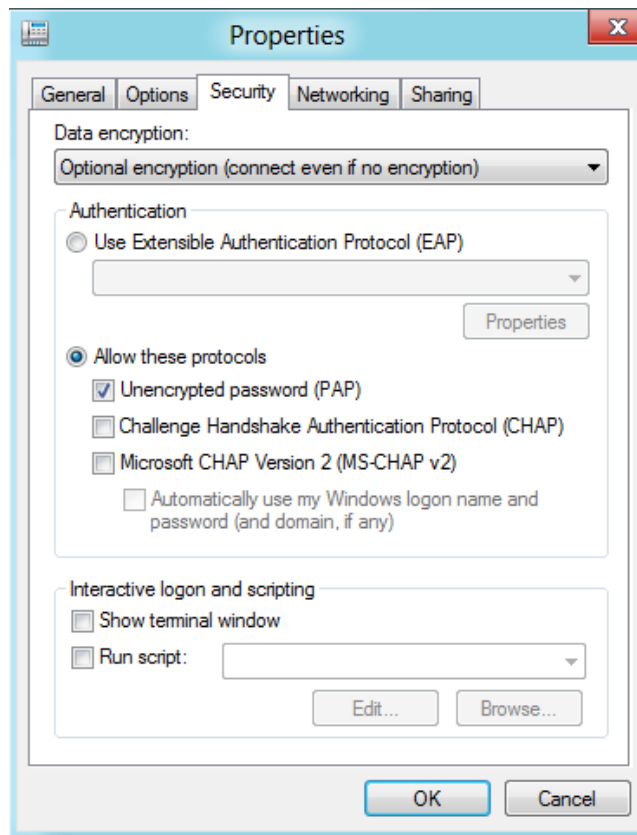


- 11) Click on « **PPP Settings** » and uncheck all options.

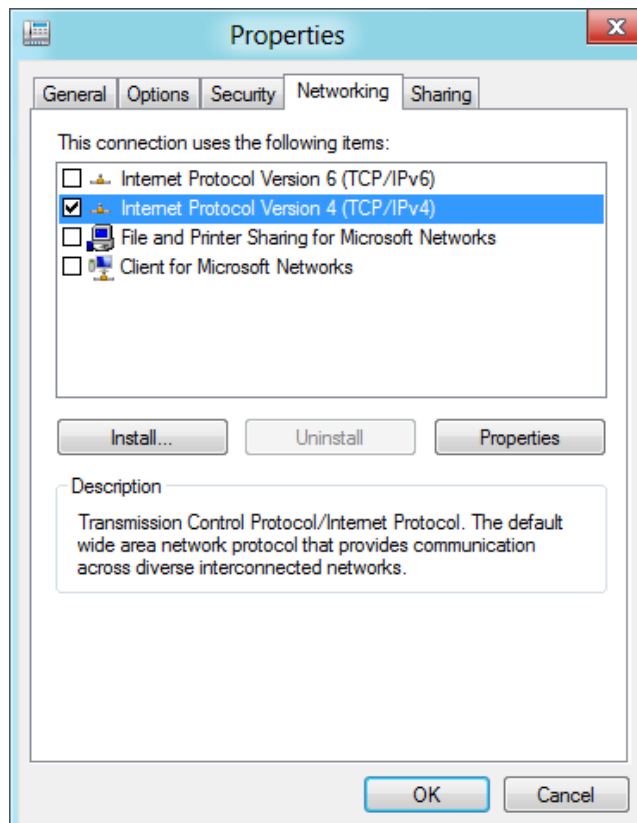


12) Choose « **Security** » tab:

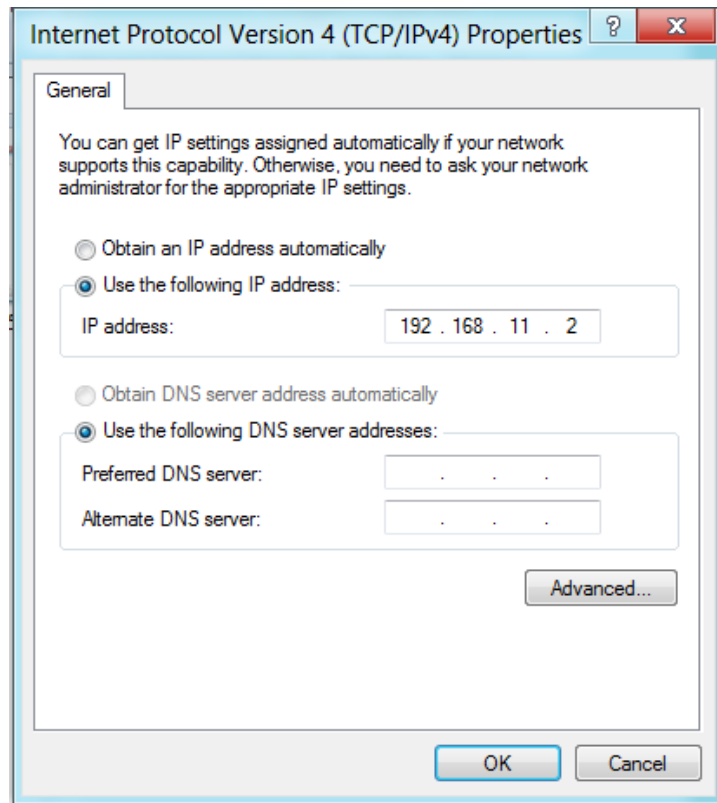
- Select « **Optional encryption** » in the data encryption list and check “**Unencrypted password (PAP)**”.



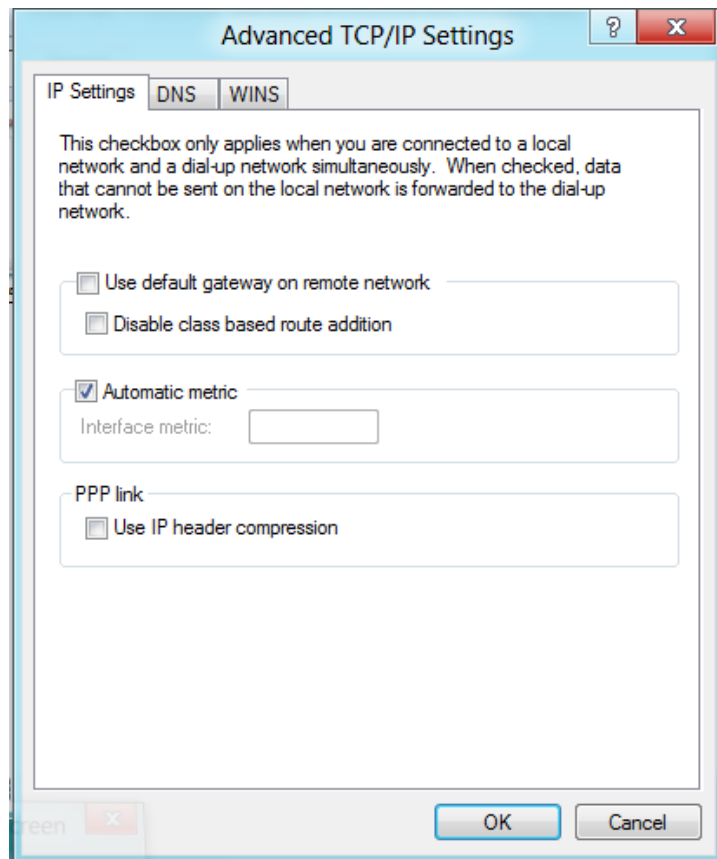
13) Choose « **Networking** » tab to select only « **Internet Protocol version 4 (TCP/IPv4)** » checkbox and click on « **Properties** » button.



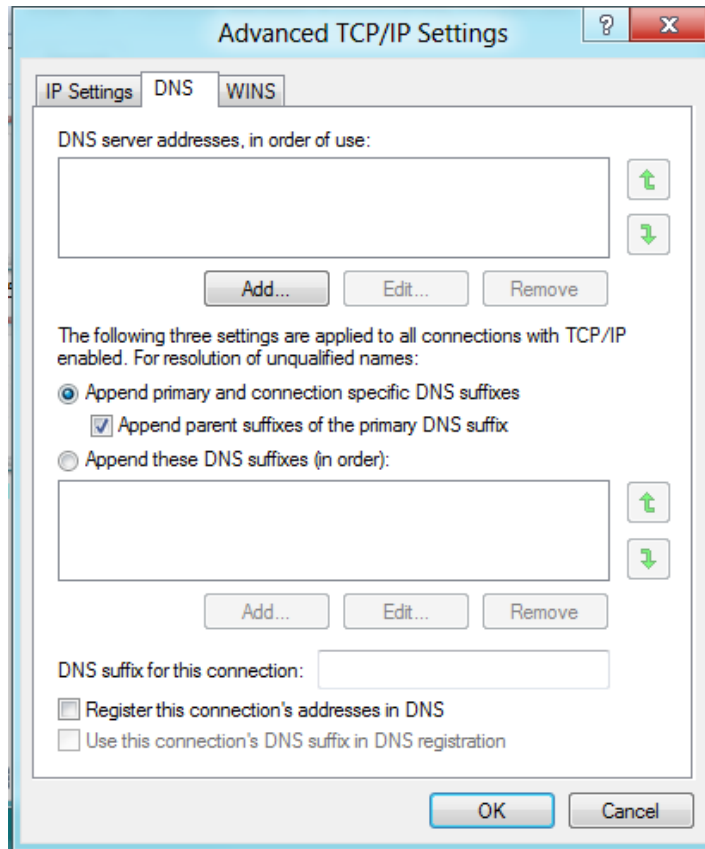
- Tick option « **Use the following IP address** » and type « 192.168.11.2 ». (Gensys IP address is « 192.168.11.1 »).



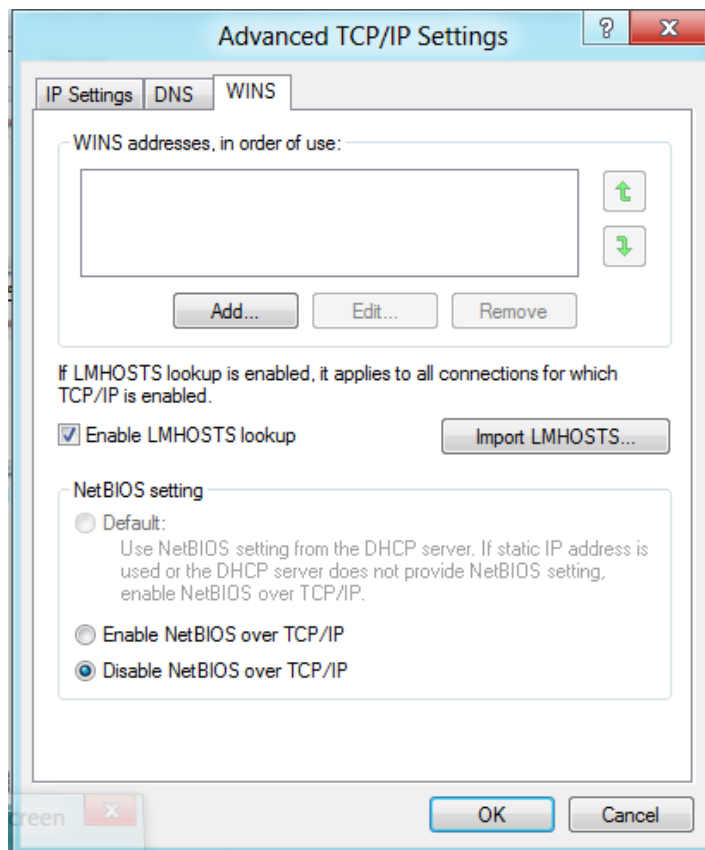
- 14) Click on « **Advanced** », choose « **IP Settings** » tab and tick only « **Automatic metric** ».



- 15) Choose « **DNS** » tab and make sure option « **Register this connection's addresses in DNS** » is not checked.



- 16) Choose « **WINS** » tab and select option « **Disable NetBIOS on TCP/IP** ».

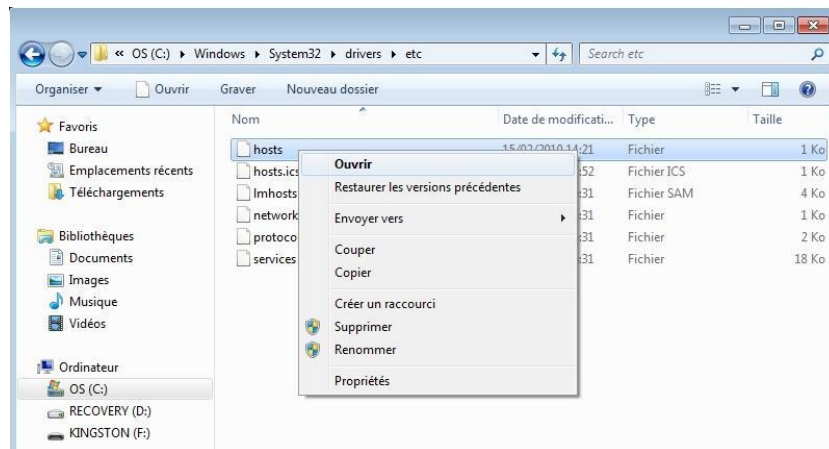


- 17) Click on « **OK** » to save new settings.

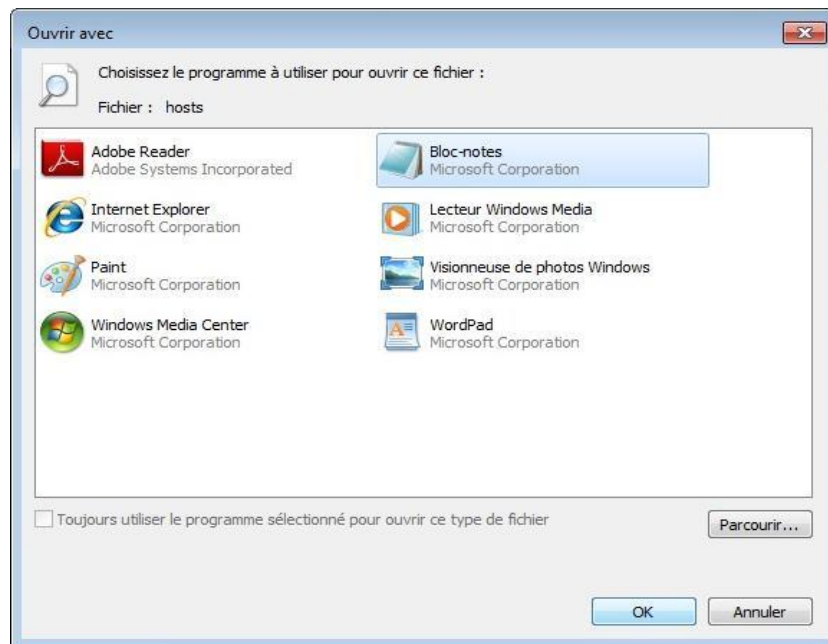


## 3 UPDATING « HOSTS » FILE

- 1) Look for the « **hosts** » file in **C:\Windows\System32\drivers\etc\hosts**
- 2) Right click on the file and select « **Open** ».



- 3) Edit the file with « **Notepad** »



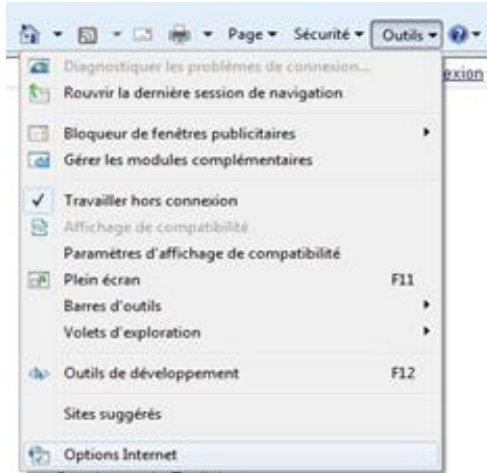
- 4) Add the following line to easily access Gensys embedded Web site:
  - « 192.168.11.1 gensys » with spaces between IP address and “gensys”.
  - Save the file (Ctrl+s).
  - If the connection is established, run your Web browser and type the following URL in the address bar: <http://gensys/>



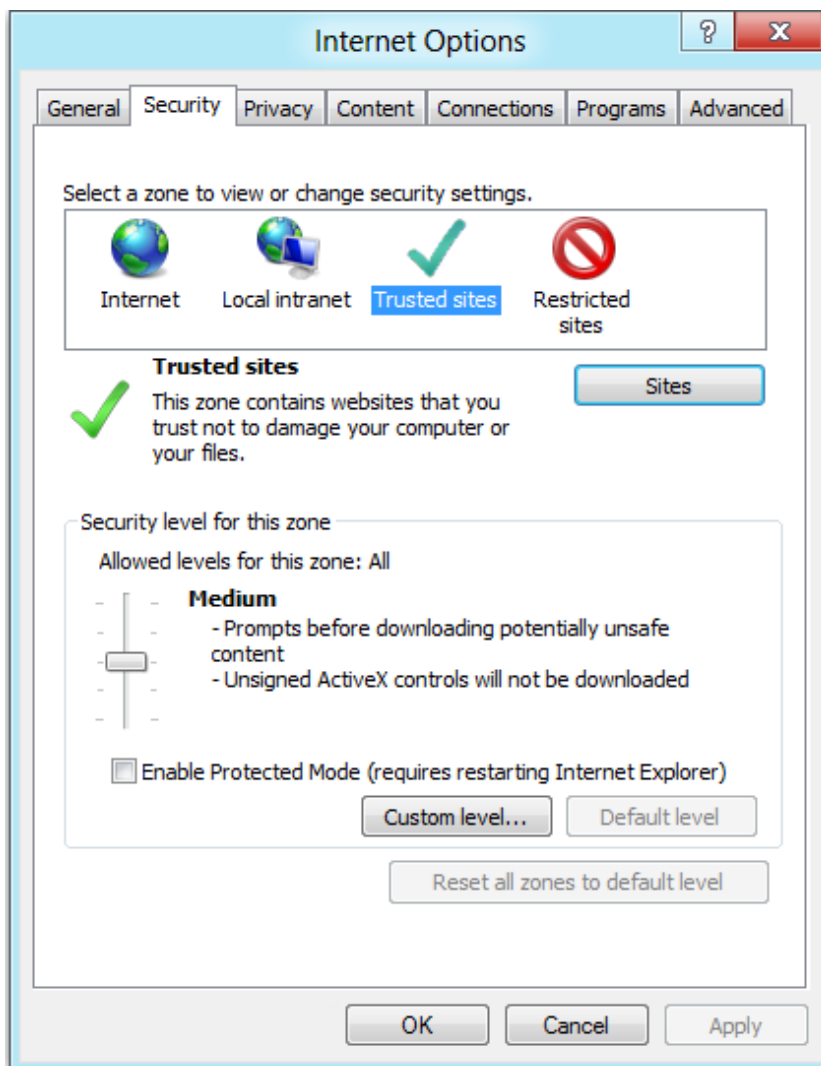
- 5) If your hosts file is write protected (read only), copy it into a new location with write attribute, type in the line « 192.168.11.1 gensys » then replace the original file with this new one.

## 4 WEB BROWSER CONFIGURATION

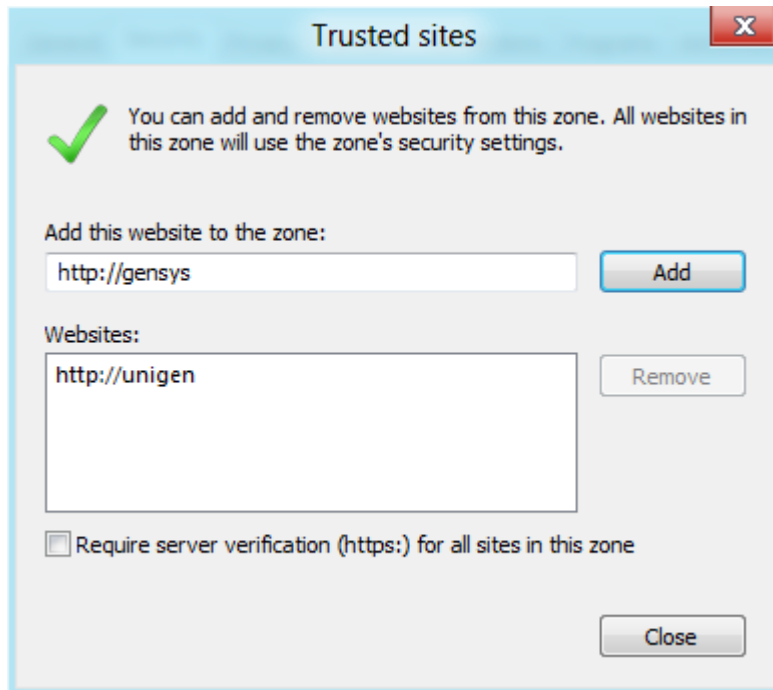
- 1) Run « **Internet Explorer** »
- 2) Click on « **Tools>Internet Options>Security** »



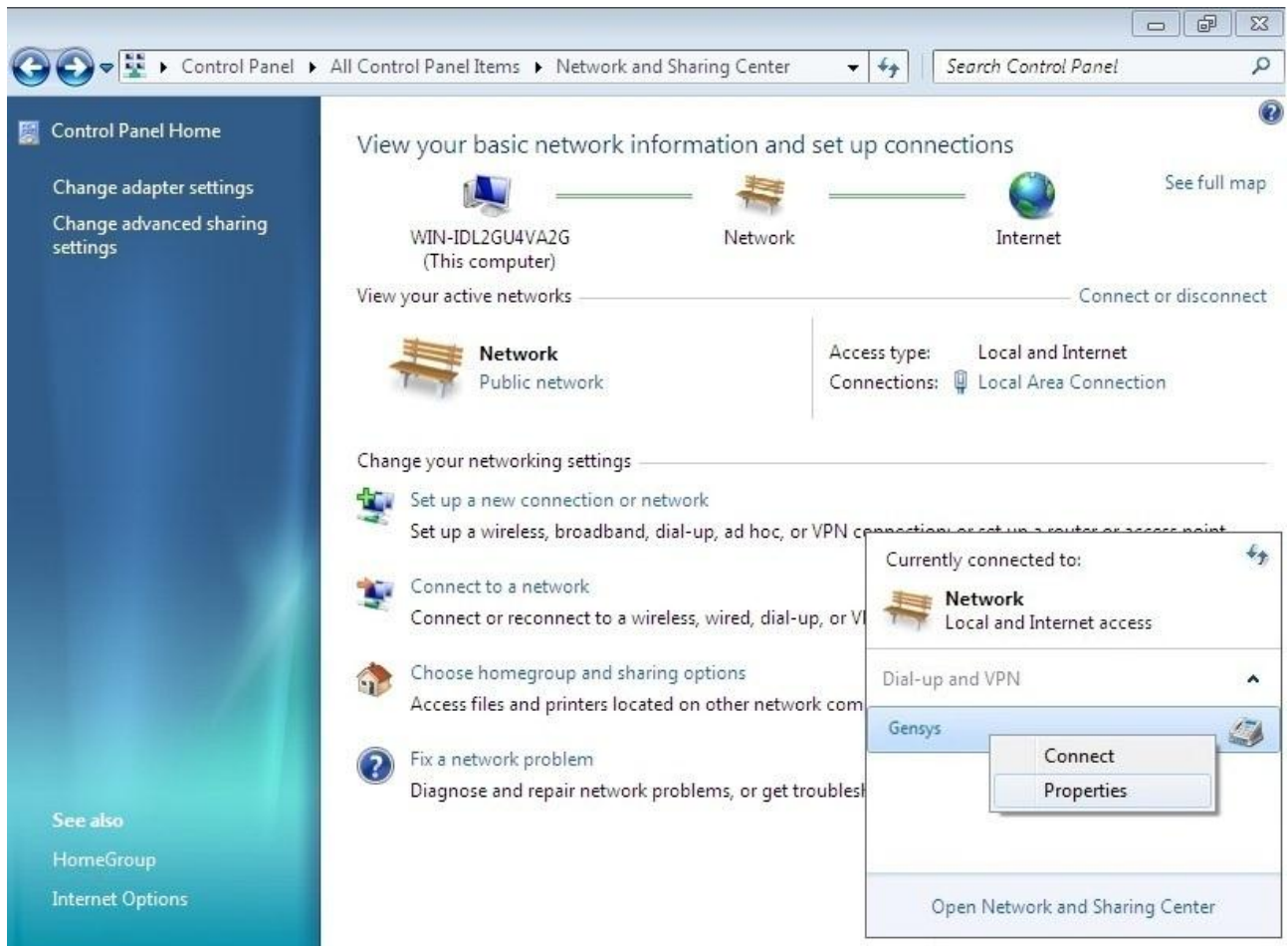
- 3) Click on « **Trusted sites** » tab and then on « **Sites** » button.



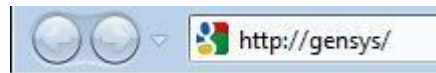
- 4) Type Gensys address (<http://gensys>), make sure that “**Require server verification (https)**” is not checked and click on « **Add** » button and then on « **Close** » button.



- 5) Close the Web browser.
- 6) Establish the modem connection then type the Gensys address (<http://gensys/>) in your Web browser.



- 7) Restart the Web browser and type Gensys URL (<http://gensys/>) in your Web browser address bar.



- 8) Check the correct display of java applets in « **Information** » page of Gensys embedded Web site: real time values should be displayed on the page (Battery voltage is equal to 23.9V on the example below).

P. lines power:	<input type="text" value="156"/>	=	0 %
Generator kW	: <input type="text" value="18"/>	=	0 kW
Generator freq:	<input type="text" value="20"/>	=	0.00 Hz
Gen. cos(phi)	: <input type="text" value="21"/>	=	0.00I
Bus voltage	: <input type="text" value="22"/>	=	1 v
Valid mains kW:	<input type="text" value="60"/>	=	0 kW
Bus frequency	: <input type="text" value="23"/>	=	0.00 Hz
Mains cos(phi)	: <input type="text" value="58"/>	=	0.00I
Engine speed	: <input type="text" value="33"/>	=	0 rpm
Batt voltage	: <input type="text" value="41"/>	=	23.9v

## 5 CRE TECHNOLOGY



130, Allée Victor Naudin  
Zone des Templiers  
Sophia-Antipolis  
06410 Biot  
FRANCE



Phone: +33 (0)4 92 38 86 82

Fax: +33 (0)4 92 38 86 83

Website: [www.cretechnology.com](http://www.cretechnology.com)



Email: [info@cretechnology.com](mailto:info@cretechnology.com)



Technical support: +33 (0)4 92 38 86 86 (office hours: 8.30AM-12AM / 2PM-6PM GMT+1).

Email: [support@cretechnology.com](mailto:support@cretechnology.com)



SKYPE: support-cretechnology.com

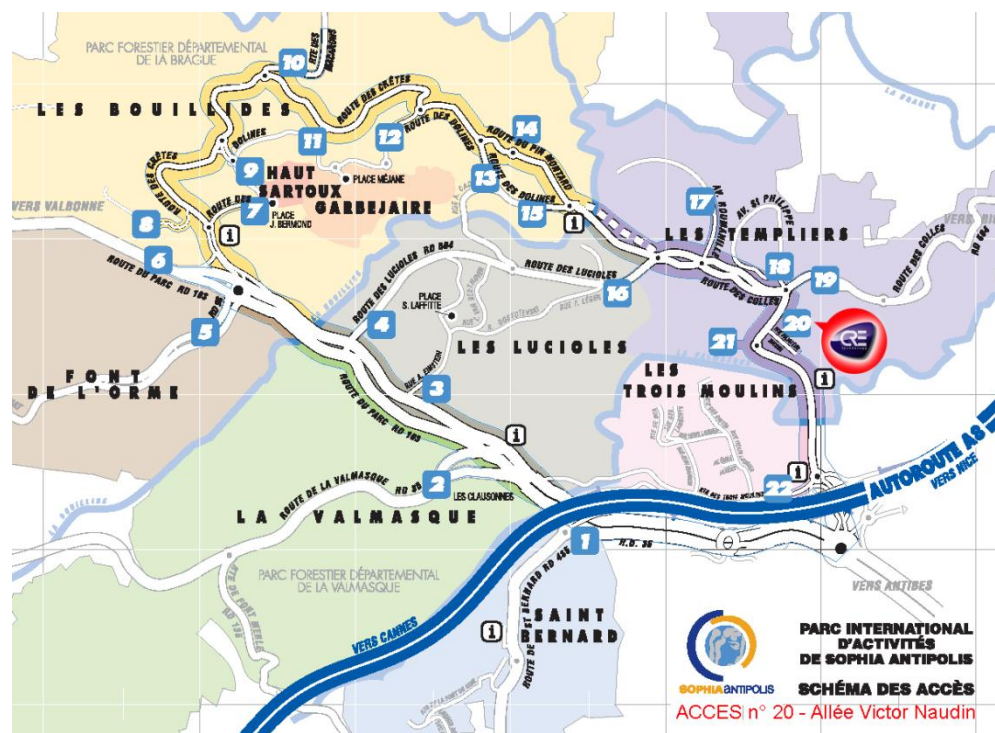


FIGURE 1 - ACCESS TO CRE TECHNOLOGY

Check our entire distributors list around the world on [www.cretechnology.com](http://www.cretechnology.com) tab "DISTRIBUTORS"



FIGURE 2 - CRE TECHNOLOGY DISTRIBUTORS

CRE Technology retains all copyrights in any text, graphic images, and software owned by CRE Technology and hereby authorizes you to electronically copy documents published herein solely for the purpose of transmitting or viewing the information.

© copyright  
all rights reserved